



## IMPORTANT INFO

- ◆ BOAT & CAMPER PICK UP AND DROP OFF TIMES  
MON-FRI: 9AM-11:30AM OR 1PM-3:30PM
- ◆ ALL TOWABLE ITEMS REQUIRE A 2" HITCH BALL WITH A HEIGHT BETWEEN 18"-22" FROM THE GROUND
  - ◆ Coleman Campers require 2 5/16" Hitch Ball
- ◆ LIGHTING REQUIREMENTS FOR EQUIPMENT:
  - ◆ BOATS AND TRAILERS: FLAT 4
  - ◆ CAMPERS, CARHAULER, PONTOON 6 & 9, BOAT 12 AND BLACK TRAILER: ROUND 7 LIGHT CONNECTION
- ◆ ITEMS CANNOT BE TAKEN OUT OF THE CONTINENTAL UNITED STATES
- ◆ BOATS ARE REQUIRED TO COME BACK WITH A FULL TANK OF GAS
- ◆ ITEMS MUST COME BACK IN SAME CONDITION AND CLEANLINESS AS WHEN THEY WERE ISSUED
- ◆ CLEANING AND MAINTENANCE **FEES** WILL BE CHARGED FOR LOST, DAMAGED, OR DIRTY ITEMS. (PRICING VARIES)
- ◆ SOME ITEMS REQUIRE A CARD NUMBER LEFT ON FILE FOR **SECURITY DEPOSITS**
- ◆ OUTDOOR RECREATION HAS **5 BUSINESS DAYS** TO ACCESS DAMAGES AND PRICING TO REPLACE ITEMS
- ◆ **50% OF YOUR TOTAL** RENTAL PRICE IS DUE AT THE TIME OF RESERVATION AND CAN BE REFUNDED UP TO 5 BUSINESS DAYS PRIOR TO YOUR SCHEDULED RESERVATION.
- ◆ ALL RENTERS MUST BE OVER THE AGE OF 18 AND HAVE A VALID DOD ID CARD.
- ◆ CUSTOMERS ARE RESPONSIBLE FOR LOADING AND UNLOADING EQUIPMENT.
- ◆ **ACTIVE DUTY MEMBERS** CAN BOOK ITEMS 2 MONTHS IN ADVANCE & **ALL OTHERS** CAN BOOK 1 MONTH IN ADVANCE

# HOURS OF OPERATION

MONDAY-FRIDAY: 9AM- 5PM

SATURDAY-SUNDAY: CLOSED

FEDERAL HOLIDAYS: CLOSED



## Outdoor Recreation

7384 N 140th dr. bldg. 247

Luke AFB, AZ 85309

(623) 856-6267



[56fss.com/outdoor-recreation](https://56fss.com/outdoor-recreation)



@LUKEODR



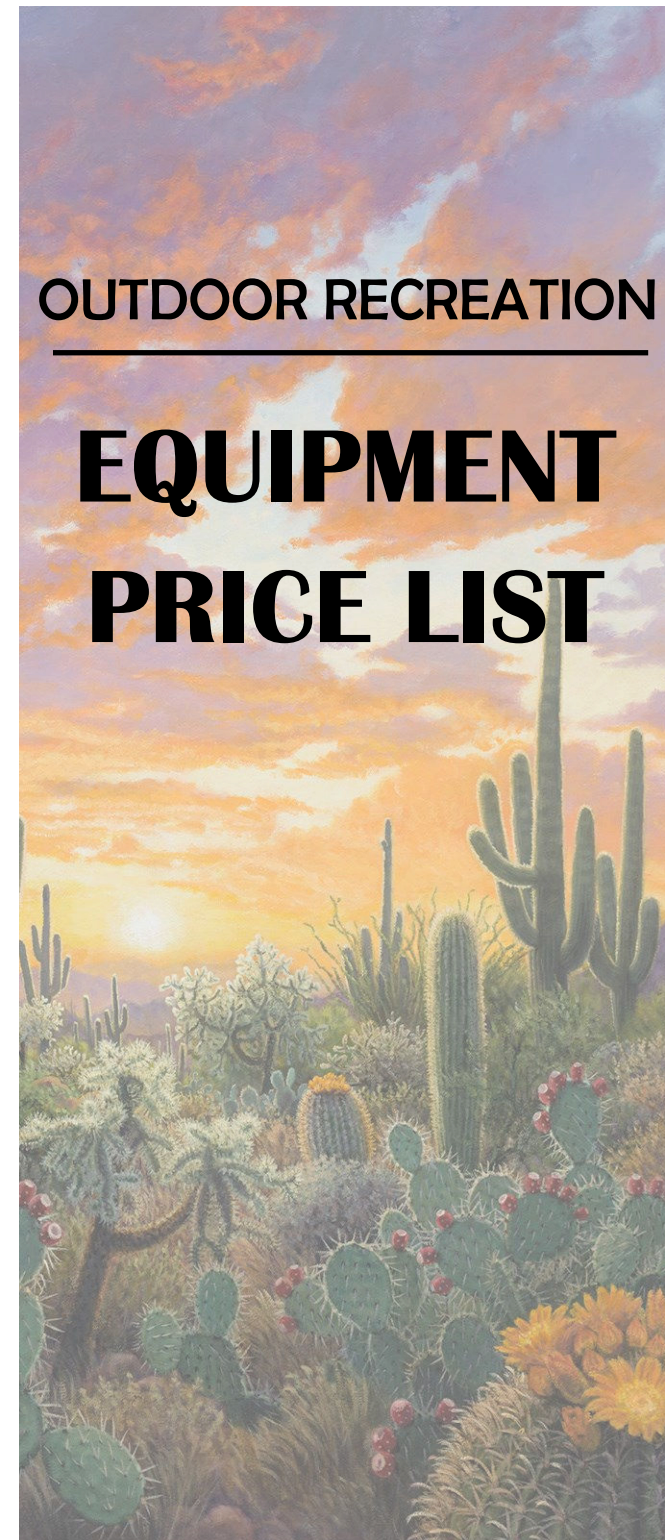
@56.OUTDOOR

**\*NO REFUNDS GIVEN FOR EARLY RETURNS OR INCLEMENT WEATHER.**

**\*\*PRICES AND FEATURES ARE SUBJECT TO CHANGE WITHOUT NOTICE.**

## OUTDOOR RECREATION

# EQUIPMENT PRICE LIST





### BOATS

	DAILY	WEEKEND	HOLIDAY
PONTOON	\$215	\$380	\$480
FISHING PONTOON	\$220	\$440	\$550
JON BOAT #1	\$25	\$50	\$62
12' FISHING BOAT #2 (TROLL)	\$35	\$70	\$87
16' BASS BOAT #3 (40hp)	\$170	\$340	\$425
16' BASS BOAT #5 (25HP)	\$160	\$320	\$400
14' FISHING BOAT #10 (9.9HP)	\$60	\$120	\$150
17' BASS BOAT #11 (60hp)	\$195	\$390	\$487
16.9' PRO BOAT #16 (115HP)	\$210	\$420	\$525
17' SKI BOAT #17 (115HP)	\$210	\$420	\$525
16' BASS BOAT #18 (25HP)	\$160	\$320	\$400
TROLLING MOTOR (W/IB)	\$4	\$8	\$10
TROLLING MOTOR (W/OUT IB)	\$8	\$16	\$20



### WATER

### SPORTS

	DAILY	WEEKEND	HOLIDAY
CANOE\$	\$15	\$30	\$37
KAYAKS (SINGLE OR TANDEM)	\$20	\$40	\$50
KAYAKS (KIDS)	\$15	\$30	\$37
PADDLEBOARD	\$20	\$40	\$50
LIFE JACKETS	\$3	\$5	\$6
TUBE-HOT DOG & RIDER	\$15	\$30	\$37.50
WATER SKIS	\$15	\$30	\$37.50
FISHING POLE	\$1.50	\$3	\$4.50
ELECTRIC PUMP	\$7	\$14	\$17.50



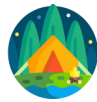
### CAMPERS

	DAILY	WEEKEND	HOLIDAY
ALINER	\$130	\$260	\$325
BUSHWACKER	\$165	\$330	\$410
COLEMAN	\$160	\$320	\$400
GENERATOR 3000W	\$27	\$54	\$67.50
GENERATOR 6000W	\$32	\$64	\$80



### MISC

	DAILY	WEEKEND	HOLIDAY
APPLIANCE DOLLY	\$8	\$16	\$20
CARPET CLEANER	\$20	\$40	\$50
CHAFFING DISH	\$5	\$10	\$12.50
CHARCOAL GRILL (TOW)	\$20	\$40	\$50
GREEN GRILL (TOW)	\$45	\$90	\$112
HAND TRUCK/DOLLY	\$3	\$6	\$7
HEATER PROPANE	\$5	\$10	\$12.50
HEATER PATIO 49R	\$10	\$20	\$30
LADDER (6' OR 16' EXTENSION)	\$5	\$10	\$12.50
METAL DETECTOR	\$4	\$8	\$12
PROPANE GRILL(TOW)	\$25	\$50	\$62
TURKEY FRYER	\$10	\$20	\$25
WORK LIGHT	\$3	\$6	\$7.50



### CAMPING

	DAILY	WEEKEND	HOLIDAY
BACKPACK	\$8	\$16	\$20
BINOCULARS	\$4	\$8	\$10.50
CAMPING CHAIR	\$3	\$6	\$7
CHARCOAL CAMP GRILL	\$5	\$10	\$12.50
COMPASS	\$2	\$3	\$4
COT	\$4	\$8	\$10
FIRE PIT	\$5	\$10	\$12.50
GROUND PAD	\$6	\$12	\$14.50
HEATER, BUDDY	\$12	\$24	\$27
LANTERN	\$5	\$10	\$12.50
SLEEPING BAG	\$6	\$12	\$15
STOVE, BACKPACK	\$3	\$6	\$7.50
STOVE, CAMP	\$5	\$10	\$12.50
TENT, (1-2 PERSON)	\$9	\$18	\$22.50
TENT, (4 PERSON) 7X7	\$13	\$26	\$39
TENT, (6 PERSON) 10X10	\$14	\$28	\$42
TREKKING POLES (SET OF 2)	\$2	\$4	\$5



### TRAILERS

	DAILY	WEEKEND	HOLIDAY
FLAT	\$27	\$54	\$67.50
6X8 ENCLOSED	\$30	\$60	\$75
6X10 ENCLOSED	\$35	\$70	\$87.50
6X12 ENCLOSED	\$40	\$80	\$100
CAR HAULER 20'	\$75	\$150	\$187.50



### SPORTS

	DAILY	WEEKEND	HOLIDAY
BIKE, MOUNTAIN	\$10	\$20	\$30
BIKE, CHILD CARRIER	\$5	\$10	\$12.50
BIKE RACK-HITCH/CAR	\$10	\$15	\$20
BALLS (BASKET, FOOT, KICK, SOCCER, VOLLEY)	\$4	\$7	\$8
BOCCI BALL	\$4	\$6	\$9
DISC GOLF BASKET	\$1.50	\$1.75	\$2
DISC GOLF FRISBEE SET	\$3	\$6	\$7.50
FLAG FOOTBALL SET	\$7	\$14	\$17.50
FRISBEE	\$2	\$4	\$5
GOLF CLUBS	\$10	\$20	\$25
HORSESHOE SET	\$2	\$4	\$5
SOFTBALL SET	\$9	\$18	\$22
SOFTBALL BAT OR GLOVE	\$1.50	\$3	\$4
TRIKKE BIKE	\$15	\$30	\$37.50
VOLLEYBALL SET (NET & POLES)	\$6	\$12	\$15

### On-Base Only items

AXE THROWING TRAILER	\$500/ 2hrs (min)	\$150/add. hr
MINI GOLF (9hole w/ 4 obs)	\$150/ 3hrs(min)	\$75/ add.hr
MINI GOLF (18hole w/ 9 obs)	\$300/ 3hrs(min)	\$75/ add.hr

PRICES CURRENT AS OF 24SEP25



### PARTY

DAILY WEEKEND HOLIDAY

BIG FOOT RACE	\$3	\$6	\$7.50
BOUNCER	\$60	\$120	\$150
BOUNCE/SLIDE COMBO	\$70	\$140	\$175
BOUNCER-INFLATABLE SLIDE	\$75	\$150	\$190
BOUNCER-OBSTACLE COURSE	\$100	\$200	\$250
CHAIRS, FOLDING	\$1	\$1.25	\$1.50
CANOPY 10X10	\$18	\$36	\$45
CANOPY 15X15	\$25	\$50	\$62
CANOPY 10X10 POP-UP	\$15	\$30	\$37
CANOPY 10x20 POP-UP	\$25	\$50	\$62.50
COOLER 52QT	\$5	\$10	\$12.50
COOLER 120QT	\$6	\$12	\$15
COOLER wheeled	\$7	\$14	\$18
COTTON CANDY MACHINE	\$25	\$50	\$62.50
DUNK TANK	\$45	\$90	\$112.50
ICE TUBS	\$5	\$10	\$12.50
KARAOKE W/ DISCS	\$7	\$14	\$17.50
PARTY TRAILER	\$70	\$140	\$175
POPCORN MACHINE(8oz)	\$25	\$50	\$62.50
SOUND SYSTEM W/MIC	\$5	\$10	\$12.50
SNOW CONE MACHINE	\$20	\$40	\$50
TABLE; 6', 8', 6' FOLDING	\$5	\$10	\$12.50
WATER JUGS (3 OR 5 GAL)	\$2	\$4	\$5



### GAMES

DAILY WEEKEND HOLIDAY

BASKET PONG	\$10	\$20	\$25
BATTLET OSS	\$10	\$20	\$25
BEAN BAG BUCKETS	\$8	\$16	\$20
BUCKET PONG	\$8	\$16	\$20
CONNECT 4 (jumbo)	\$10	\$20	\$25
CORNHOLE	\$3	\$6	\$7.50
CROQUET	\$8	\$16	\$20
KUBB (LAWN BOWLING)	\$9	\$18	\$22.50
LADDERBALL	\$8	\$16	\$20
RING TOSS	\$5	\$10	\$12.50
SPIKEBALL	\$5	\$10	\$12.50
TUG-OF-WAR(1 OR 4-WAY)	\$2	\$4	\$5
WASHER TOSS	\$3	\$6	\$7.50
YARD JENGA	\$6	\$12	\$15
YARD YAHTZEE	\$3	\$6	\$7.50



### LAWN & GARDEN

DAILY WEEKEND HOLIDAY

BOW SAW	\$3	\$6	\$7
HEDGE TRIMMER (ELECTRIC)	\$5	\$10	\$12.50
HOE, RAKE, AXE, SHOVEL	\$2	\$4	\$8
LAWN MOWER, GAS	\$5	\$10	\$15
LAWN MOWER, MANUAL	\$3	\$4	\$5
POST HOLE DIGGER	\$1.50	\$3	\$4
POWER WASHER	\$20	\$40	\$50
PRUNING SHEARS	\$1.50	\$3	\$4
SPREADER, SEED	\$2.50	\$5	\$6
TREE TRIMMER (ELECTRIC)	\$10	\$20	\$25
WEEDEATER (ELECTRIC)	\$5	\$10	\$15
WHEELBARROW	\$5	\$10	\$15
YARD BLOWER	\$5	\$10	\$15