



FIGHTER COUNTRY INN

Luke AFB, Arizona

*W*elcome to the "Valley of the Sun"!

Please enjoy your stay...

The entire Fighter Country Inn team is delighted to extend to you a warm welcome and we are pleased you have chosen to stay with us. We trust your stay will be both enjoyable and comfortable.

As you may know, we carry the Air Force Inn's proud legacy of excellence and are committed to your comfort. Additionally, here at Fighter Country Inn, we offer a great variety of services to choose from at competitive prices. Brochures for local attractions are located in the lobby area, so please feel free to take them with you to read at your leisure.

While you are here, please take advantage of the outstanding activities proudly presented by the 56th Force Support Squadron. Should you require any assistance, have specific requirements, or just want to suggest something, please do not hesitate to let us know.

Jane Yates

JANE M. YATES, CHA, NF-IV
Lodging Manager



**DEPARTMENT OF THE AIR FORCE
56TH FIGHTER WING (AETC)
LUKE AIR FORCE BASE AZ 85309-1629**

6 January 2025

MEMORANDUM FOR ALL LODGING GUESTS

FROM: 56 FSS/FSVL

SUBJECT: FY25 Approved Lodging Rates

1. Effective 1 January 2025, SAF/FMC approved the lodging rates listed below for FY25. These rates are market driven within per diem levels for all room types at all locations, and structured to include installation operating costs, centralized costs, and recapitalization requirements. Additionally, at locations with DoD preferred commercial lodging, Visiting Quarters room rates do not exceed the maximum DoD preferred rates.

2. Oct – Jan, Apr - May, Sept	TLF \$152	VQ \$144	DVQ \$151
Feb – Mar	\$189	\$171	\$204
Jun – Aug	\$112	\$101	\$111

3. Thank you for your continued patronage.

YATES.JANE.M.1039289 Digitally signed by
YATES.JANE.M.1039289640
640 Date: 2025.01.06 16:00:20 -0700

**JANE M. YATES, CHA, NFIV
General Manager, Fighter Country Inn**

LODGING INFORMATION

WELCOME VALUED GUEST! “We have provided you with a few complimentary items to get you through your first night stay. Feel free to ask any lodging team member if you need any of these items replenished. If you forgot to pack any other toiletry item, please come see us at the front desk. We should have what you need available for purchase.”

THE AIR FORCE INNS PROMISE: “Our goal is to provide you a clean, comfortable room to guarantee a good night’s rest and pleasant stay. If any part of your stay with us is not satisfactory, please provide the lodging manager or front desk staff an opportunity to “make it right.”

LODGING’S BUSINESS CENTER is open 24 hours a day and is located in building 660 adjacent to the front desk and can be accessed by using your room key. The center is equipped with computers, printing, copy capability and a conference table. We provide free fax and copy services for official government business. The center is free; however, guests are prohibited from going to unauthorized web sites while using the Internet. Our fax numbers are: DSN: 896-3332, commercial (623) 856-3332, and our business center fax is (623) 856-8796.

BILLING PROCEDURES: Cash and check paying customers are required to pay room charges in advance. All official duty travelers must have a valid government travel card, Visa, or MasterCard on file. Long-term guests remaining past the end of the month are required to visit the front desk and settle their account every 15 days. If a guest fails to settle their account, lodging will charge their respective credit card on the last day of the month for the full amount due.

QUIET HOURS: Many of our guests are here for training and work irregular hours. Quiet hours are observed around the clock. Let’s work together to make their stay quiet and peaceful so day sleepers can rest.

PARKING is free for all guests. Over-sized vehicles or trailers in tow are too big for our parking lots. A separate lot is available for your use. Please inquire at the front desk for information.

CHECK OUT TIME is 11:00 a.m.

EXPRESS CHECK OUT is available in all DV Suites. Please call the front desk to obtain your account balance.

ICE MACHINES are located in the laundry rooms of each building. TLF refrigerators are equipped with an automatic ice maker.

LODGING INFORMATION

OCCUPANT RESPONSIBILITIES: Guests are responsible for the upkeep of the kitchen to include dishes and appliances. An additional fee will be charged to occupants who leave the dishes, stove, or refrigerator dirty. Guests are also responsible for the conduct of their family members and guests. Occupants may be held liable for missing items and any damage beyond fair wear and tear. Please help us maintain our facilities for the next guest or your next visit.

HOUSEKEEPING/MAINTENANCE SERVICE: We have a professional maintenance and housekeeping staff that takes great pride in maintaining our facilities. We provide housekeeping service 7 days a week. Our staff will provide the following service on a daily basis: make the bed, empty the trash, exchange towels (**when they are left on the floor**), clean the restroom, and clean the floors when major messes are noticed. They will provide full service once a week that includes daily duties plus changing the sheets and light dusting. Bedspreads and blankets will be cleaned once a month for long-term guests. Staff members are not permitted to handle personal items. If items are left on the bed, the room attendant will not make the bed. Personal items such as money or high value items (jewelry, electronics, etc.) should not be left out in plain view. There is a safe in the room to secure your valuables. If we inadvertently missed something, please call the front desk. Our goal is to respond to your needs within 30 minutes of notification during normal duty hours for our housekeeping staff (0800-1600). Unfortunately, after hours service is limited to emergencies only. The 56th Civil Engineering Squadron has personnel on call after-hours to respond to emergency situations such as plumbing (toilet overflowing), no hot water/heat/AC. Regardless of the time of day, please report all housekeeping and maintenance issues to the front desk.




PET POLICY: Fighter Country Inn has 14 pet friendly TLFs to include 2 rooms with ADA accommodations (Americans with Disabilities Act). For the health of all our guests, we ask that pets be boarded in kennels in the local area for those not assigned a pet friendly TLF. Please inquire at the front desk for information. Guests may be charged up to a \$150.00 fee based on expenses incurred to return the room to available inventory if a pet is found in the room. These fees include additional labor costs, lost revenue if the room must be blocked and all fees associated with cleaning the carpet, upholstery, drapes, ridding the room of fleas, and any damage caused by the pet. You may also be asked to vacate the premises.

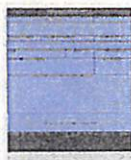


SMOKING is not permitted in lodging rooms. Ashtrays are located at the various pavilions surrounding our facilities for guest use. Please be considerate and adhere to this policy. Guests may be charged up to a \$150.00 fee based on expenses incurred to return the room to available inventory. These fees include additional labor costs, lost revenue if the room must be clocked and all fees associated with cleaning the walls, carpet, upholstery, and drapes to restore the room to a smoke-free environment.

LODGING INFORMATION



LAUNDRY FACILITIES: High efficiency washers and dryers are available free of charge to all lodging guests and are located in each building. You will need your room key to gain access to these facilities. Dispensers containing soap, fabric softener and powdered bleach are located in each laundry room, and are also available for sale at the front desk. We recommend using high efficiency laundry detergent. However, regular detergent in small amounts can be used in high efficiency machines. We ask that parents supervise their small children to ensure they do not hurt themselves by playing with laundry carts or climbing inside machines.



GUEST COMMENTS: Please take a few minutes and let us know how we're doing. We value your input and greatly appreciate you taking the time to complete a Guest Comment Card. A Guest Comment Card will be emailed to you if an email address is provided.

GENERAL INFORMATION

MAIL: The post office is located on Mustang Street and is within a short walking distance from our facilities. Guests wishing to receive mail must visit the post office to set up a general delivery account. You will need your ID card and a copy of your travel orders to begin delivery. Lodging personnel are not official mail handlers and should not process or handle personal mail. The post office is open Monday through Friday 0745-1230 hours and 1330-1545 hours, and is closed on Saturday and Sunday.

WEAPONS AND CLASSIFIED DOCUMENT STORAGE is not available at The Fighter Country Inn.

Please contact security forces at 856-6322 or report to Bldg 179 concerning weapons storage. Contact the command post at 856-5600 to store classified material.

FIRE/GROUND SAFETY rules are for your protection. Please avoid storing highly flammable liquids/materials in your room. Do not light candles or incense sticks inside the room. Lighted or used candles will be confiscated. Do not use unauthorized cooking, heating, or cooling devices in your room. If using a portable charcoal grill, place it a minimum of 30 feet away from the building. Electrical multi-plugs are unauthorized due to overloading circuits. Please turn off all appliances when leaving your room. Do not place hot appliances in the closets or on the bed. If you are in quarters with a kitchen, do not leave cooking equipment unattended.



ENERGY CONSERVATION is important to help preserve our natural resources. Please help us conserve utilities by keeping doors and windows closed while heating or cooling systems are operating. Please turn off lights, radios (alarms) and TVs when leaving the room.

MAINTENANCE OF GOVERNMENT PROPERTY: Linens and towels should be used for their intended purpose. Please do not remove them from your room or use them to polish and/or clean your car. We ask guests to adhere to good housekeeping practices while visiting with us. For your safety and the safety of our housekeeping staff, we ask that you maintain basic levels of cleanliness. Excessive dirtiness may result in additional charges for steam cleaning, etc. For safety and sanitation reasons, Room attendants are required to enter all rooms every 72 hours regardless if a **'Do Not Disturb'** sign is on the door. Please report maintenance or telephone problems to the front desk by calling (623) 935-2641.

EMERGENCY INFORMATION

EMERGENCY ASSISTANCE - DIAL 911

NON-EMERGENCY ASSISTANCE:

Chaplain	97 - 6 - 6211
(After duty hours)	97 - 6 - 5800
Command Post	97 - 6 - 5600
Fire Department	97 - 6 - 6641
Security Police	97 - 6 - 5970
Locator Assist	97 - 6 - 6405

WEATHER WARNING AND ALERT INFORMATION

***3-5 Minute Steady Tone:** Imminent peacetime emergencies only (tornadoes, earthquakes, flash floods, etc.) Monitor radio, television, base PA for instructions. Unless you receive other instructions, remain indoors and away from windows, inside hallways or bathrooms are the safest places during tornadoes.

***3-5 Minute Wavering Tone:** Actual attack is imminent or in progress. ACTION: Take immediate shelter or other protective action.

TEST SIGNALS

Wavering or Steady Tone: Not to exceed 30 seconds in duration. This is a test only, take no action.

Thunderstorm Watch: Heavy thunderstorm activity has been sighted. Prepare to take shelter.

Thunderstorm Warning: Rain, strong winds, and possible hail. Seek shelter.

Tornado Watch: A tornado watch means tornadoes are expected to develop in a specified area, for a specified period of time.

Take the Following Actions:

- Stay informed. Monitor the local radio or television station for the latest weather advisory.
- If you are in the watch area, be prepared to take shelter, for protection against tornadoes, you should select a central hallway or a centrally located room on the lowest floor of your duty section or quarters away from the windows, doorways and wide ceilings.
- Preposition sturdy tables, blankets, flashlights, etc. in the area selected for use during tornadoes.
- Unless a tornado warning is issued, you should not further interrupt your normal routine, but should remain alert for the approach of threatening weather conditions or the termination of the tornado watch.

TORNADO WARNING

A tornado warning means a tornado has actually been sighted in the surrounding area. The warning will indicate the location of the tornado at the time of detection, and the area through which it is expected to move. The alert warning signal is a 3-5 minute tone from the siren system. This signal will be sounded when a tornado is threatening the base or the surrounding area. Take immediate safety precautions. Do not leave your duty section or quarters, remain indoors. Take shelter in the area selected during the tornado watch. Get underneath a sturdy table and cover yourself with a blanket. This will provide protection against broken glass and flying debris. Continue to monitor the local radio or television stations for further information. Remain in the shelter area until the "all clear" is announced.

EMERGENCY ROOM & HOSPITAL

BANNER ESTRELLA MEDICAL CENTER

9201 West Thomas Road
Phoenix, AZ 85037
(623) 327 - 4000

DIRECTIONS:

Approximately 9.9 miles and 19 minutes travel time.

1. Exit Luke AFB through the south gate.
2. Turn left onto Litchfield Road.
3. Turn right onto Glendale Ave., follow Glendale Ave to Loop 101.
4. Turn right onto Loop 101, entrance ramp heading south.
5. Exit Loop 101 and turn left onto W. Thomas Road.
6. Banner Estrella Medical Center will be on the right side of W. Thomas Road.

ABRAZO WEST CAMPUS

13677 West McDowell Road
Goodyear, AZ 85395
(623) 882 - 1500

DIRECTIONS:

Approximately 5.9 miles and 12 minutes travel time.

1. Exit Luke AFB through the south gate.
2. Turn right onto Litchfield Road.
3. Turn left onto W. McDowell Road. Pass the shopping center.
4. ABRAZO WEST HOSP will be on the right side of W. McDowell Road in the back behind the Doctor's offices.

DIGNITY HEALTH - EMERGENCY DEPARTMENT

4975 N Dysart Road
Litchfield Park, AZ 85340
(602) 406-8855

DIRECTIONS:

Approximately 3.9 miles and 9 minutes.

1. Exit Luke AFB through the south gate.
2. Turn right on Litchfield Road. 1.5 mi.
3. Turn left on W Camelback Road. 1.5 mi.
4. Destination will be on the right S/E corner.

URGENT CARE

SUN VALLEY URGENT CARE

2910 North Litchfield Road
Goodyear, AZ 85395
(623) 218 - 6907

DIRECTIONS:

Approximately 4.6 miles and 9 minutes travel time.

1. Exit Luke AFB through the south gate.
2. Turn right onto Litchfield Road.
3. Sun Valley Urgent Care will be on the right side of Litchfield Road.

NEXT CARE URGENT CARE

13075 West McDowell Road Suite D106
Avondale, AZ 85392
(623) 547 - 0521

DIRECTIONS:

Approximately 6.6 miles and 15 minutes travel time.

1. Exit Luke AFB through the south gate.
2. Turn right onto Litchfield Road.
3. Turn left onto Camelback Road.
4. Turn right onto Dysart Road.
5. Turn left on McDowell Road
6. Next Care will be on the right side of McDowell Road.



**UNITED STATES AIR FORCE BASE
FIGHTER COUNTRY INN – Luke AFB
Television Channel Line Up**

General Viewing

3. Channel Guide
4. Local Marketing Channel
5. CBS - KPHO HD
6. ABC – KNXV HD
7. CW – KASW HD
8. PBS – KAET HD
9. MNT – KUTP HD
10. FOX – KSAZ HD
11. TMO – KTAZ HD
12. NBC – KPNX HD
13. Cartoon Network
14. Nickelodeon HD
15. Teen NICK
16. NICK Jr.
17. Baby First TV
18. Disney Junior
19. Disney Channel HD
20. Disney XD
21. Freeform HD
22. TV Land
23. RFD TV
24. Hallmark Channel HD
25. ReelzChannel HD
26. Lifetime HD
27. Ovation HD
28. Bravo HD
29. A&E HD
30. FX HD
31. BBC America HD
32. TLC HD
33. TBS HD
34. TNT HD
35. USA Network HD
36. Animal Planet HD
37. NASA TV
38. Discovery HD
39. National Geographic HD
40. Velocity HD
41. History Channel HD
42. ID: Investigation Discovery HD
43. Tru TV
44. Food Network HD
45. HGTV HD

46. Univision
47. Galavision

News & Information

48. CNN HD
49. CNN Headline News HD
50. FOX News HD
51. C-SPAN
52. C-SPAN 2
53. Bloomberg Television
54. MSNBC HD
55. CNBC HD
56. Weather Nation

Sports & Entertainment

57. ESPN HD
58. ESPN 2 HD
59. ESPNEWS HD
60. ESPNU HD
61. Big Ten Network HD
62. Fox Sports 1 HD
63. Pursuit Channel

Music & More!

64. AXS HD
65. AUDIENCE HD
66. LINK
67. MTV HD
68. MTV2
69. BET HD
70. VH1 HD
71. CMT HD
72. Spike TV HD
73. Syfy HD
74. E! Entertainment HD
75. Comedy Central HD

Movies

76. AMC HD
77. Hallmark Movie Channel HD
78. Turner Classic Movies - TCM HD

PHOENIX RADIO GUIDE

ROCK

KDKB-FM 93.3
KUPD-FM 97.9
KZON-FM 105.5
KEDJ-FM 106.3
KZON-FM 101.5

NEWS TALK

KXAM-AM 1310
PPHX-AM 1480

SPANISH

KNIX-FM 102.5
KIDR-AM 740

JAZZ

KYOT-FM 95.5
KOAZ-FM 103.5

NEWS

KJZZ – FM 91.5

ADULT CONTEMPORARY

KKLT-FM 98.7
KESZ-FM 99.9
KBZR-FM 103.9
KZZP-FM 104.7

SPORTS TALK

KMVP-AM 860
KGME-AM 1360
KTAR-AM 620
KFYI-AM 910

COUNTRY

KTIM-AM 1250
KVVA-FM 107.1
KMLE-FM 107.9

OLDIES

KOOL-FM 94.7
KHTC-FM 96.9
KOOL-AM 960



Luke AFB LODGING CISCO TELEPHONE INSTRUCTIONS

Room to Room	Room Number
Front Desk	0
Base Operator	97 + 0
On Base Calls	97 + 856 + 4 Digit Number
DSN (Government Official Calls)	97 + 94 + DSN Number
Local Calls (Off Base)	99 + 623 + Number (No Charge)
Long Distance (US)	99 + 1 + Area Code + Number (Charge to Guest: \$0.10 per Minute)
Long Distance (International)	99 + 011 + Country Code + Number (Charge to Guest: Rates available at the Front Desk)
1 + 8XX Numbers Applies to: 800, 888, 877, 866, etc.	99 + 1 + 8XX + Number (No Charge)

FOR EMERGENCY DIAL 911

To Set a wakeup Call:

Dial 73050, Press 1. Follow the prompts to set a wakeup call.

To Cancel a Wakeup Call:

Dial 73050, press 2 to cancel a wakeup call.

To Retrieve Messages From Your Telephone Mail Box:

To retrieve and / or delete messages from your room dial 6000 and follow the voice prompts (Default Password: Extension Number).

(Note: If you have a Cisco Phone you may just press the message button)

Please DO NOT unplug the phone cable.

For questions or comments about this service, please contact:

MidAtlanticBroadband Hospitality Services

729 East Pratt Street, Suite 440

Baltimore, MD 21202

(410) 727-8250



Wireless High Speed Internet Instructions

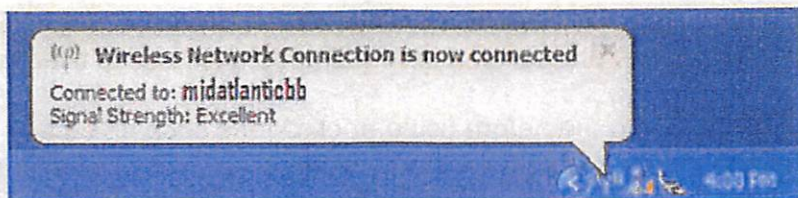
Wireless internet service is provided via an 802.11b/g signal. This signal is not encrypted, and no login credentials are needed. The Dynamic Host Configuration Protocol (DHCP) service will automatically setup your Internet Protocol (IP) and your Domain Name System (DNS). DNS is an Internet System that translates web names into IP addresses. If you have trouble connecting to the wireless service please see below.

PC Setup Instructions

1. Turn on your computer; most computers will try to automatically connect to any available wireless network. Connect to the Service Set ID (SSID) Network Name: **midatlanticbb**. If you cannot connect or unable to see the signal see troubleshooting below.
2. Ensure your computer is setup to use the DHCP service or obtain an IP automatically. If you regularly connect to wireless hot spots your computer should be setup for this. If unsure please see troubleshooting section below.
3. If you're having a problem connecting to a Virtual Private Network (VPN) please contact our help desk.

Troubleshooting

1. **Unable to detect wireless signal** – If you are unable to see the “midatlanticbb” wireless signal. Verify that your wireless card is on. Some laptops have switches that will turn the wireless card on or off. If you're unable to see the wireless signal, try moving your laptop to another part of the room to check if it's a signal issue. Contact the Help Desk for support on wireless signal issues.




2.

Windows machines will look like this when connected.

3. **IP Settings** - The internet service use's DHCP to assign IP addressing automatically, below is a reference of how your computer will be configured.
 - a) Address Type: (Assigned by DHCP)
 - b) IP Address/IPv4 IP Address: IP address between (10.71.X.X –10.71.X.X)
 - c) Subnet Mask/IPv4 Subnet Mask: (255.255.224.0)
 - d) Default Gateway/IPv4 Default Gateway: (10.71.0.1)

LUKE AIR FORCE BASE FACILITIES

AAFES:

Base Exchange, Bldg 1540	623-935-2671
Barber Shop, BX, Bldg 1540	623-535-7430
Beauty Shop, BX, Bldg 1540	623-536-1897
Burger King, Bldg 1124 Thunderbird St.	623-256-6117
Clothing Sales Bldg 1552	623-935-2671
Food Court, BX, Bldg 1540	623-935-4029
 Gas Station, AAFES, Bldg 1124 Thunderbird St.	623-266-0040
Laundry/Cleaners, BX, Bldg 1552	623-935-7241
Optical Shop, BX, Bldg 1540	623-935-1179
Shoppette/Class VI Package Store, Bldg 1124 Thunderbird St.	623-266-0040
Firestone Service Center (Tire), Bldg 1124 Thunderbird St.	623-271-8104
Accounting & Finance	623-856-7028
Airman's Attic	623-856-6415
Airman & Family Readiness Center	623-856-6550
Armed Forces Bank, Bldg 1500	623-535-9766
Armed Forces Bank Inside the BX	623-535-8604
American Red Cross	602-336-6660

ARTS & CRAFTS, BLDG 247:

Multi Craft Shop, Bldg 247	623 856-6722
Wood Skills, Bldg 247	623 856-6566
Auto Skills, Bldg 248	623-856-6107

Chapel Locations:

COM is the Chapel on the Mall – Building 25

LCC is the Luke Community Chapel – Bldg 799 (Please refer to Base Map in the Directory)

Luke Community Chapel, (LLC) – Bldg 799
Monday-Friday 0730-1630

623-856-6211

LUKE AIR FORCE BASE FACILITIES



Protestant Worship Services:

Contemporary Gospel Service, Sunday	1000 at LCC
Traditional Service, Sunday	1130 at LCC

Catholic Worship Services:

Mass, Saturday	1700 at LCC
Mass, Sunday	0830 at LCC
Mass or Liturgy of the Word, Daily, Mon-Fri	1200 at LCC

Islamic/Jewish or Other Faiths:

Personnel are welcome to attend local synagogues. Phone numbers may be obtained from the local community directory or by calling the chapel at 623-856-6211 during duty hours.

Chaplain on call: A Chaplain is available 24 hours a day, 7 days a week by calling the duty Chaplain through the Command Post at 623-856-5600.

Child Development Center - Bldg 1117	856-6338
Civilian Personnel	856-7747
Clothing Sales - Bldg 1552	856-6310
Commissary - Bldg 1550	623-935-3821
Community Center - Bldg 700	623-856-7152
Credit Union West - Bldg 1535	602-631-3200
Club Five Six – Bldg 161 Bong Lane & Eagle Street	856-6446
Dining Facility, Falcon Inn Flight Kitchen – Bldg 954	856-6420
Dining Facility (Main), Ray V. Hensman - Bldg 545	856-6396
Education Office - Bldg 1150	856-7722
Family Child Care - Bldg 1117	856-7472
Fitness Center – Bldg 820	856-6241
Fitness Center Annex - Bldg 1137	856-8299
Fort Tuthill Open 24 Hours	856-3401



Club Five Six – Bldg 161 Bong Lane & Eagle Street 856-6446

Dining Facility, Falcon Inn Flight Kitchen – Bldg 954 856-6420

Dining Facility (Main), Ray V. Hensman - Bldg 545 856-6396

Education Office - Bldg 1150 856-7722

Family Child Care - Bldg 1117 856-7472

Fitness Center – Bldg 820 856-6241

Fitness Center Annex - Bldg 1137 856-8299

**Fort Tuthill
Open 24 Hours** 856-3401



Falcon Dunes Golf Course 623-535-9334
Golf Shop 623-535-9334
Golf Shop Restaurant 856-0004

LUKE AIR FORCE BASE FACILITIES

Honor Guard	856-7240
Housing Referral & Relocation Office	856-7643/7544
Balfour Beatty Communities	623-388-3515
 Hospital/Clinic (On-Base) Appointment Desk Emergency	856-2273 911
Human Resources Office (NAF) - Bldg 1150 1st Floor	856-7755
Information Tickets & Tours - Bldg 1150 1st Floor	856-6000
Library - Bldg 219	856-7191
Luke Barber Shop - Bldg 700	623-935-5742
Military Personnel Customer Support - Bldg 1150	856-7832
Mortuary Affairs	856-3771
Marketing & Publicity - Bldg 1150	856-3245
Outdoor Recreation - Bldg 247	856-6267
 Silver Wings Pool (Seasonal May-1 Oct) Silver Wings Pavilion Reservations (Seasonal May-1 Oct) Picnic Pavilions Reservations	856-7120 856-7120 856-6267
Post Office (Closed for lunch 1230-1330)	623-935-1343
School Age Programs	856-7471
TRANSPORTATION:	856-6866
Base Taxi (Official Business)	856-6866
Bus - Luke Link	856-3521
Hertz Car Rental (Goodyear)	632 932- 4266
Youth Programs	623-932-4266
Veterinary Clinic	856-6354

56 FORCE SUPPORT SQUADRON DINING FACILITIES



Falcon Dunes Golf Course Snack Bar
15100 W. Northern Ave
(623) 856-0004



CLUB FIVE SIX
(623) -856-6446/6447
BLDG #161
West Eagle Street

56 FORCE SUPPORT SQUADRON DINING FACILITIES



Hensman Dining Facility
14032 Mustang Street
(623) 856-6396



Falcon Flight Kitchen
14442 W. Shooting Star
(623) 856-6420

Base Facility Hours of Operation

FLIGHT LINE KITCHEN – Closed on Weekends

Lunch:	Monday – Friday	1100 - 1300
Dinner:	Monday – Friday	1700 - 2000
Midnight Meal:	Sunday – Saturday	2300 - 0100

DINING FACILITY –

Breakfast:	Monday – Friday	0600 - 0800
Brunch:	Saturday – Sunday	0700 – 1300
Lunch:	Monday – Friday	1100 - 1300
Dinner:	Sunday – Saturday	1600 – 1800

BURGER KING –

Sunday	CLOSED
Monday – Friday	0600 – 1800
Saturday	1000 – 1700

FOOD COURT –

Monday – Saturday	1000 – 1800
Sunday	1000 – 1700

STARBUCKS -

Sunday	0900 – 1600
Monday – Friday	0600 – 1800
Saturday	0800 – 1600

GOLF COURSE – Winter hours starting 1 October.

Weekend/Weekdays	0600 – 1900
------------------	-------------

BX –

Sunday	1000 – 1700
Monday – Saturday	0830 - 1800

LIBRARY –

Monday	0930 – 1930
Tuesday – Friday	0930 – 1730
Saturday	1000 – 1600
Sunday	CLOSED

CLASS SIX / SHOPPETTE –

Monday – Friday	0530 – 2200
Saturday – Sunday	0730 – 2230

Base Facility Hours of Operation

MILITARY CLOTHING –

Sunday	CLOSED
Monday – Saturday	0900 – 1600

CLUB 56 –

Monday – Tuesday	1100 – 1330
Wednesday – Friday	1100 – 1330

* Harlow's open 1530 – 1830 Wednesday – Friday.

CHAPEL –

Sunday:	Main Chapel	0830
	Small Chapel	1730
Saturday:	Main Chapel	1700

COMMISARY –

Sunday	0900 – 1800
Monday – Saturday	0900 – 2000

LUKE EXCHANGE INFORMATION

JOHN WAYNE ANDERSON

GENERAL MANAGER

An Oasis in the desert, the Luke Exchange offers modern facilities and plenty of shopping opportunities to meet the needs of its diverse customer base. Additionally, the Exchange is one of the largest employers of military family members, providing a safe, secure environment, and for some military dependents, is close to home.

Employment preference is given to qualified spouses of active duty military members, to veterans that meet specific eligibility conditions and to eligible former Exchange associates.

The Luke Exchange serves more than, 4,642 military members and 73,805 families, military retirees, National Guard, Reserve and their dependents from all branches of the military.

The Main Exchange complex houses a mall and food court which includes four restaurants.

The specialty shops in the mall, includes beauty shop, barber shop, optical shop, laundry and dry cleaning, GNC and Optometry.

The Military Clothing Store, Burger King, Firestone and the Express/Class Six/Gas are conveniently located within walking distance of the Exchange and Commissary. The service station is located within a 1/2 mile of the Luke AFB North Gate.

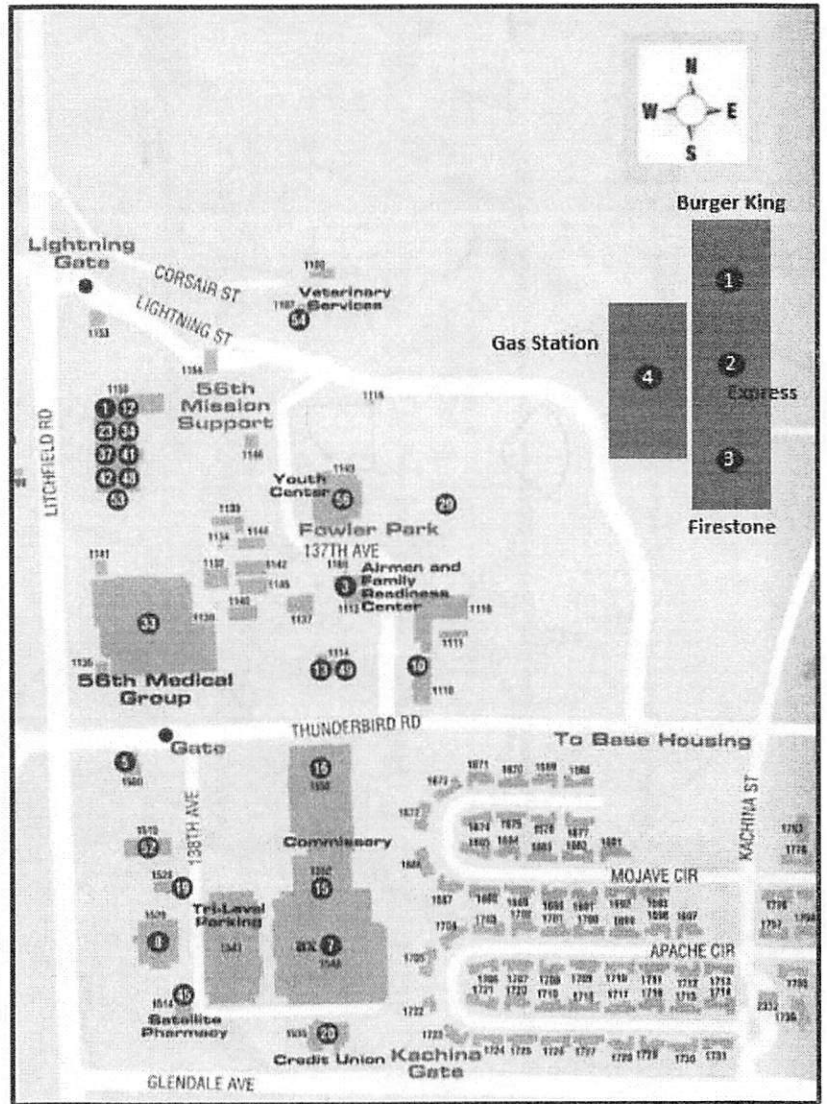
The Luke Exchange proudly serves The Thunderbolt Nation, improving the quality of your lives through goods and services we provide. Family serving family!

Dry Cleaners/Alteration: (623) 935-7241



LUKE EXCHANGE MAP

FACILITIES	BUILDING	COORDINATE
Burger King	1114	1
Express	1114	2
Firestone	1114	3
Gas Station	1114	4
Armed Forces Bank	1500	5
Main Exchange	1540	7
Child Development Center	1118	10
Military Clothing Store	1552	15
Commissary	1550	16
Credit Union West	1535	20
Luke Pharmacy	1514	45
Youth Center	1143	56





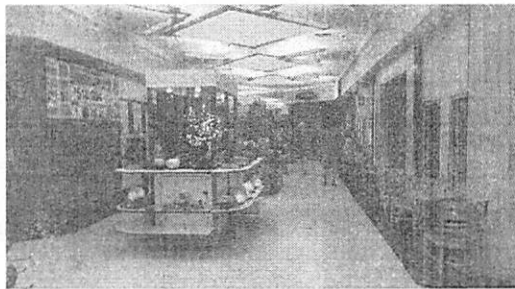
MAIN EXCHANGE



PARKING GARAGE



EXCHANGE MALL



EXCHANGE MALL



FOOD COURT

BUILDING 1540

- Main Exchange** : (623) 935-2671 DSN: 896-7147
- Barber Shop** : (623) 249-6789
- Beauty Shop** : (623) 533-3895
- GNC** : (623) 535-9661
- Computer Repair** : (623) 328-9028
- Wireless Kiosk** : (623) 856-535-5104

FOOD COURT

(623) 935-4029



- Military Clothing Store:** (623) 856-6310
- Optical Shop** : (623) 935-1179
- Firestone** : (623) 271-8104
- Luke Express** : (623) 266-0040
- Burger King** : (623) 256-6117

AAFES DINING FACILITIES



Starbucks

AAFES Main Food Court
(623) 935-4029



Subway

ACTIVITY CENTER, Bldg 700
(623) 856-8450



Burger King

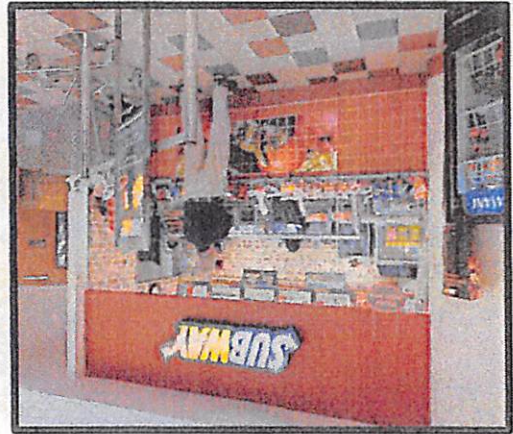
Bldg 1124, Thunderbird Street
(623) 256-6117

AAFES
DINING FACILITIES

Charley's Grilled Subs
AAFES Main Food Court
(623) 935-4029



SUBWAY
Sandwich Shoppe
AAFES Main Food Court
(623) 215-2028



Popeyes
Chicken & Biscuits
AAFES Main Food Court
(623) 215-3226



LOCAL AREA RESTAURANTS



Goodyear
1559 N Litchfield Rd
623-536-7270



Goodyear
1330 N Dysart Rd
623-882-8288



Goodyear
1209 N. Litchfield Rd
623-856-5161



Goodyear
1700 N Dysart Rd
623-932-9058



Goodyear
1371 N Litchfield Rd
623-535-4222



Avondale
1525 Dysart Rd
1-800-786-1000



Goodyear
1474 N Litchfield Rd
623-209-7000



Goodyear
14251 W Indian School
623-536-2279



Litchfield Park
6901 N Litchfield Rd
623-535-1518



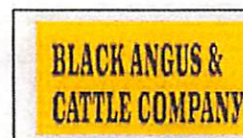
Glendale
7017 N Litchfield Rd
623-935-1345



Goodyear
13832 W McDowell Rd
623-536-8440



Goodyear
13837 McDowell Rd
623-536-6397



Goodyear
13766 W McDowell Rd
623-535-8585



Glendale
13105 Glendale Ave
623-935-5009

LOCAL AREA RESTAURANTS



Goodyear
1218 N Litchfield Rd
623-935-7388



Glendale
13820 W Glendale Ave
623-535-8377



Goodyear
14175 W Indian School
623-535-3965



Glendale
13751 W Glendale Ave
623-935-6198



Surprise
13379 W Grand Ave
623-975-6774



Glendale
13821 W. Glendale Ave
623-935-5139

LOCAL AREA RESTAURANTS

WESTGATE CITY CENTER DINING LOOP 101 and Glendale Avenue

TRAVEN+BOWL
602-8750875

Buffalo Wild Wings
623-877-9127

COLD STONE CREAMERY
623-772- 1580

CRACKER BARREL
LOOP 101 & GLENDALE AVE
623-772-1930

GORDON BIRSCH
623- 877-4300

HOT N JUICY CRAWFISH
623 872-2984

KABUKI
623-772-9832

MAMA GINA'S PIZZERIA
623-872-0300

MCFADDEN'S
623-872-0022

WHISKEY ROSE BAR & GRILL
623-877-7673

OPA LIFE GREEK CAFE
623-242-8338

JOHNNY ROCKET
623-877-2977

Crumbl cookies
602-675-9555
Dutch Brothers Coffee

SHANES RIB SHACK
623-877-7427

Jersay Mike's Subs
623-877-0012

OLIVE GARDEN
623-872-0003

YARD HOUSE
623-872-9424

Manna Korean BBQ
623-877-5007

LOCAL AREA RESTAURANTS

CHIPOTLE MEXICAN GRILL
623-201-1758

SALT TACOS TEQUILA
623-772-7282

BAR LOUIE
623-522-5810

Iks's Love & Sandwiches
877-5225

DAVE & BUSTERS
623-759-7800

Wetzel's Pretzels
480-469-3626

FRESH HEALTHY CAFÉ
623-505-3277

Fat Tuesday
623-230-2509

TANGER OUTLET STORES IN THE AREA

AREA ATTRACTIONS

**The United States Air Force and the
Federal Government do not endorse
establishments:**

**These establishments are listed for
guest convenience only.**

AREA ATTRACTIONS



NASCAR, Stock Cars, Indy Cars, IMSA Sports Cars,
AMA Motorcycles and the colorful Copper World Classic.
623-772-2000 or www.phoenixintlraceway.com



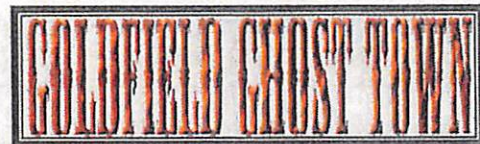
Arizona Fairgrounds
1826 W. McDowell Road in Phoenix
602-252-6771 or www.azstatefair.com



The Arizona Science Center
Offers hands-on fun with over 300 interactive exhibits,
planetarium, live demonstrations, and travel exhibitions.
Located on 600 E. Washington St. in Phoenix



Enjoy one, three, or even five hours of tubing down AZ's
Salt River. Don't forget, no glass bottles allowed on the river!
Located 1320 N Bush Highway in Mesa
480-984-3305 or www.saltrivertubing.com



Scenic railroad & mine tours
Be sure to bring your camera!
Located off of Highway 88
480-983-0333 or www.goldfieldghosttown.com



Rawhide Western Town & Steakhouse
They bring the Wild West to Life!
Located 5700 W. North Loop Rd.; Chandler, AZ exit 162 off I-10
480-502-1880 or www.rawhide.com



WILD LIFE WORLE ZOO & AQUARIUM
16501 W Northern Ave, Litchfield Park, AZ 85340
623-935-9453

AREA ATTRACTIONS

POINTS OF INTEREST

Ashley Furniture Pavilion

Great place for concerts and live performances
Located on 2121 N. 83rd Ave.; Phoenix, AZ
For more information and event calendars
602-254-7200 or www.livenation.com



Chase Field
Arizona's premier sports and entertainment complex.
Located on 201 E. Jefferson St. in downtown Phoenix, AZ
For more information and event calendars
602-379-2000 or www.americawestarena.com



Home of the San Diego Padres & Seattle Mariners spring training.
Located on 16101 N. 83rd Ave.; Peoria, AZ
For more information and event calendars:
623-773-7110 or www.peoriaaz.com/sportscomplex Box Office
623-773-8720



Jobing.com Arena
Home of the Phoenix Coyotes Hockey Club
Local venue for a wide variety of concerts and events
Located at 9400 W. Maryland Ave.; Glendale, AZ
Phone: 623.772.3200 | Fax: 623.772.3201

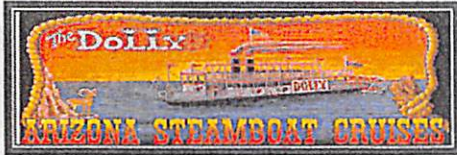


University of Phoenix Stadium
Located on: 1 Cardinals Drive; Glendale, AZ
Come see an NFL game while you stay with us.
For more information and event calendars:
602-379-0102 or www.azcardinals.com



The home of over 1,200 animals!
Located on 455 N. Galvin Parkway; Phoenix, AZ
602-273-1341 or www.phoenixzoo.com

AREA ATTRACTIONS



Experience a 'Mark Twain' voyage abroad,
The Dolly Steamboat, a replica of a Sternwheeler Paddleboat.
Located N. of Rt. 60 in Mesa
480-827-9144 or www.dollysteamboat.com



Castles N' Coasters
The only major amusement park in Arizona!
Includes 100-foot roller coaster, log ride, four miniature golf
courses, and arcade.
Located at 9445 Metro Pkwy. E.; Phoenix, AZ (602)997-7575

MOVIE THEATERS

Harkins Estrella Falls 16 Movie Times
15010 W. McDowell Road
623-223-1105

Gateway Pavilions 18 (Harkins)
10250 W. McDowell Rd.
623-478-9411

Palm Valley
1325 N. Litchfield Rd.
623-535-4000

AMC surprise Pointe west 14
13649 N Litchfield Road
623-584-3884

Arrowhead AMC
7700 W. Bell Rd.
602-956-4262

Arrowhead Fountains 18 (Harkins)
16046 N Arrowhead Fountains Center Dr
623-412-0122

VIDEO STORES



**BASE SHOPPETTE EXPRESS * GAS
STATION * CLASS SIX STORE * RED
BOX VIDEOS & MORE. BLDG1114**

623-266-0040



Circle K (Red Box Videos)

13843 W Glendale Ave.

623-935-0968

AREA ATTRactions

AAFES Shoppette, Bldg 1114 (623)935-2414

SHOPPING

Arrowhead Town Center

623-979-7575

7700 W. Bell Rd., Glendale

Featuring a variety of department stores, specialty shops, a food court and a movie theater.

Gateway Pavilions Shopping Center

Located on the NW Corner of 99th Ave and McDowell at the intersection of I 10 and Loop 101

Featuring a variety of stores, specialty shops, a movie complex and a wide variety of restaurants .

Includes Costco, Borders Book Store, Sports Authority, Circuit City, Bed Bath and Beyond, Red Robin, Krispy Kreme and more!

Palm Valley Pavilions East/West/and Palm Valley Cornerstone

Located North of I 10 on McDowell Rd between Litchfield Rd and Dysart Rd. Includes Best

Buy, Linens and Things, Barnes & Noble, Target, Lowes, Kohls, Office Max, Petsmart,

Macayos, Stuart Anderson Black Angus, Macaroni Grill, Applebys, and much, much more!



Goodyear
1515 N. Litchfield Rd.
623-935-3510



Avondale
1459 N. Dysart Rd.
623-882-3859



Avondale
13055 Rancho Santa Fe Blvd.
623-935-4010

Goodyear
14200 W. Indian School Rd.
623-935-7578

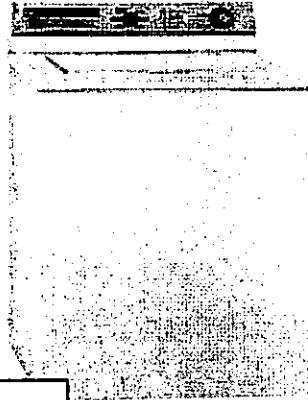


Avondale
10000 W. McDowell
623-907-5663

CLEANERS, ALTERATIONS, & LAUNDROMATS

**Base Dry Cleaners and
Alterations BLDG 1552**
Outside Base Exchange
623-935-7241

Capri Cleaners
5110 N. Dysart Road
Litchfield Park, AZ
623-535-9402



**Kim's Customer
Tailor, Etc**
7023 N. Litchfield Rd
Glendale, AZ
623-935-5501

Cactus Cleaners
13730 W. Glendale Ave
Glendale, AZ
623-935-1575

Estrella Cleaners and Laundry
North End of Fry's Shopping Center
432 N Litchfield Rd, Suite 324
Goodyear, AZ
623-932-1025

AREA KENNELS



Academy West Animal Hospital
Boarding & Grooming
6231 W. Bell Rd., Glendale

602-938-8650

Ambassador Animal Hospital
5831 W. Cactus Rd,
Glendale, AZ

623-979-0303

Apollo Boarding & Grooming
10707 N. 51st Ave.,
Glendale, AZ

623-934-7231

Dapper Dog Boarding & Grooming
12851 W. Bell Rd. Ste 1,
Surprise, AZ

623-583-0222

Desert Palms Pet Resort
560 N Bullard Ave. #59,
Goodyear, AZ

623-882-8866

Estrella Animal Hospital
10865 W. Indian School Rd.,
Avondale, AZ

623-877-1088

AREA KENNELS



Glendale Animal Hospital
6440 NW Grand Ave,
Glendale, AZ

623-934-7243

Glenfair Veterinary Hospital, Inc
5820 N. 59th Ave.,
Glendale, AZ

623-939-3351

Pets Hotel (Inside Pets Mart)
7290 W. Bell Rd,
Glendale, AZ

623-979-0016

Sun City Animal Hospital
10026 Santa Fe Dr,
Sun City, AZ

623-974-3691

VCA Phoenix West Animal Hospital
6530 W. Indian School Rd,
Phoenix, AZ

623-846-5965

AREA ATTRACTIONS

Fort Tuthill

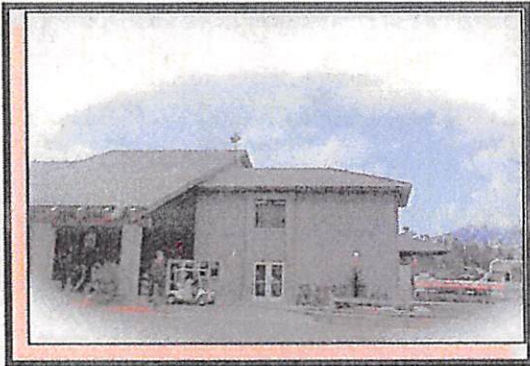
Flagstaff, AZ

forttuthill@lukeevents.com

(623) 856-3401

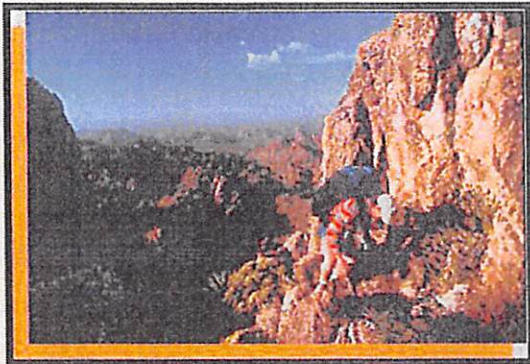
(928) 774-8893

DSN 896-3401



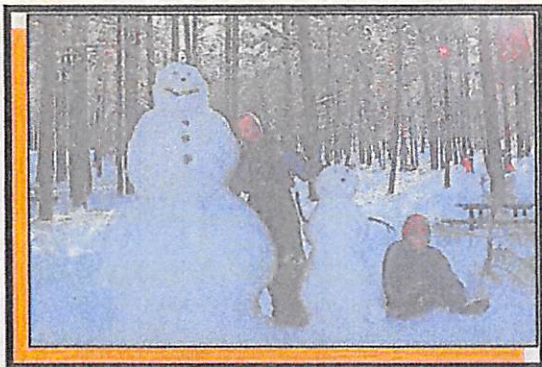
Location

- Closest military facility to Grand Canyon
- Located three miles south of historic Flagstaff, AZ
- Centrally located for sightseeing and outdoor recreation
- Majestic view of San Francisco Peaks



Outdoor Adventures

- Exciting whitewater river trips
- Grand Canyon backpacking expeditions
- Winter Wonder playground –
Ski and Snowboard Rentals
- Cool Ponderosa pine forest retreat –
mountain bike rentals



Customer Service

- Open year round, 24 hours a day
- RV & Tent camping – May through Sept only
- Hotel rooms, A-frames and cabins year around
- Yurts – May through Sept only
- www.forttuthill.com

TRANSPORTATION

Airline Information

**Phoenix Sky Harbor
International Airport**
602-273-3300

Bus Information

Airport Service (Super shuttle)
602-244-9000

Luke Link Bus
623-930-3521

Valley Metro Bus
602-253-5000

Taxi Information

Base Taxi (Official Business)
623-856-6866

Checker Cab
602-257-1818

Discount Cab
602-266-1110

Yellow Cab/AAA Cab
602-252-5252

Car Rental Information

Alamo
602-244-0897

AVIS (ON BASE)
480-559-9068 -800-331-1212

BUDGET (ON BASE)

602-714-3300 – 800-527-7000
Monday – Friday 8 AM-5 PM
Saturday – 8AM - 2:30 PM
Sunday - 8:30 AM to NOON

Hertz
(Goodyear)
623-932-4266

Enterprise Car Rental
602-267-8822
(Air Port)

National
602-275-4771

Thrifty
602-244-0311

Information, Ticket & Travel
(including Leisure Travel)
(ITT) on base
(623) 856-6000

AIRLINE TOLL – FREE NUMBERS

ALASKA AIRLINES	800-426-0333
AIR TRAN	800-825-8538
AIR ARUBA	800-882-7822
AIR CANADA	888-247-2262
AIR CHINA	800-982-9802
CONTINENTAL	800-525-0280
DELTA AIRLINES	800-221-1212
FRONTIER AIRLINES	800-432-1359
GREAT LAKES AIRLINES	800-554-5111
HAWAIIAN AIRLINES	800-367-5320
JET BLUE	800-275-3209
MESA AIRLINES	800-637-2247
MEXICANA AIRLINES	800-531-7921
MIDWAY AIRLINES	800-446-4392
SOUTHWEST AIRLINES	800-435-9792
SUN COUNTRY	800-359-6786
UNITED AIRLINES	800-241-6522
US AIRWAYS	800-428-4322
WEST JET	866-666-6224

LUKE HISTORY

Luke AFB History

On 8 August 1940, the same day the Battle of Britain began, President Franklin D. Roosevelt directed the military to produce 12,000 pilots annually. In response to that order, the Army Air Corps conducted feasibility studies for the construction of eight new air fields. Phoenix City Manager Donald C. Scott announced on 13 February 1941 that the War Department had approved a site two miles north of the town of Litchfield Park, AZ, for the construction of an advanced single engine flying training base. The site not only had almost year-round flying weather, but it also enjoyed close proximity to vast stretches of desert that were ideal for bombing and gunnery practice. Two days later, Lt Col Ennis C. Whitehead arrived in the area to supervise construction of the base and to act as its first commander.

Ground was broken for Litchfield Park AB on 31 March 1941, and on 6 June 1941 the installation was renamed Luke Field for 2nd Lt Frank Luke, Jr., a Phoenix native who was a World War I ace and the first aviator to be awarded the Medal of Honor. The first student pilot class began training the next day. During World War II, Luke Field produced 17,321 graduates from fighter training programs for the US and its allies. The base closed on 30 November 1946.

Luke AFB reopened on 1 February 1951 in response to a need for fighter aircrews generated by the Korean Conflict. The base was initially equipped with F-51 Mustang and F-84 Thunder jet aircraft. In 1957 the F-100 Super Sabre was assigned followed in 1964 by foreign military sales programs in the F-104 Starfighter and the F-5A Freedom Fighter. The A-7D Corsair arrived in 1969, but was reassigned when the decision was made to make Luke USAF's primary F-4 Phantom II training base. The first F-4 was assigned in 1971. The first of the "Superfighters," the F-15 Eagle, was assigned to the base in 1974 followed in 1982 by the second "Superfighter," the F-16 Fighting Falcon, and then the F-15E Strike Eagle arrived in 1988. A decision to make Luke the service's primary F-16 training base led to the reassignment of the F-15 in 1991 and the F-15E in 1995. Since 1941, Luke has produced over 57,000 graduates from fighter training programs for the US and its allies

LUKE HISTORY

56th Fighter Wing History

The 56th Fighter Wing, one of the most highly decorated aviation units in history, traced its history to the 56th Pursuit Group, which first activated on 16 January 1941 at Savannah AB, Georgia. Redesignated a fighter group, the unit was equipped with the P-47 Thunderbolt and then reassigned to England. On 13 April 1943, the 56th flew its first combat mission of World War II. During its two-year involvement in the air war in Europe, the group shot down 667 enemy aircraft, more than any other group in the theater. It damaged or destroyed 1,598.5 enemy aircraft. In the process, the 56th only lost 25 fighters in aerial combat. The group produced 40 fighter aces.

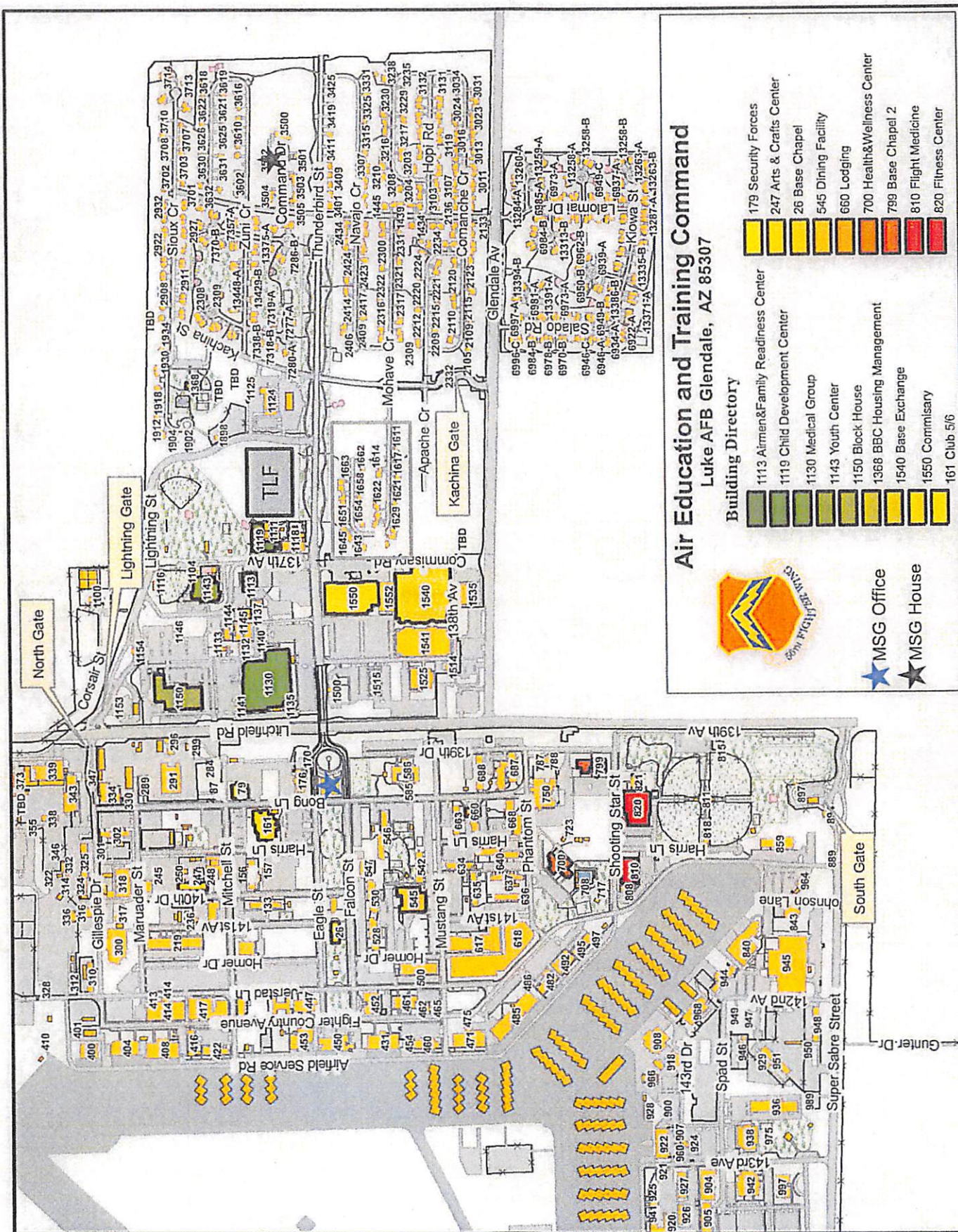
After World War II, the 56th Fighter Group was assigned at Selfridge Field, Michigan. On 15 August 1947, the 56th Fighter Wing was activated with the group as a subordinate unit. The wing's mission was air defense. The unit wrote another chapter in aviation history when on 14 July 1948 when its F-80, Shooting Stars, made the first ever west-to-east crossing of the Atlantic by military jet fighters. The flight was a month after the Soviets set up their blockade of Berlin, and put the Soviets on notice that the United States was capable of deploying a large package of modern military aircraft across the Atlantic in minimum time. The wing was inactivated on 1 January 1964.

On 16 March 1967, the wing activated as 56th Air Commando Wing at Nakhon Phanom Royal Thai Air Force Base (AFB), Thailand, then on 1 August 1968, redesignated as the 56th Special Operations Wing. The 56th trained Laotian and Thai Air Force personnel, and supported and conducted combat operations against opposing armed enemy forces. It played a major part in trying to win the hearts and minds of the population with its Civic Action Section. It took part in search and rescue, and suppression of enemy defenses missions. As such, it took part in the Battles for Khe San and Lima Site 85, as well as the rescue raid on Son Tay prisoner of war camp and the attempt to rescue of the crew of the United States merchant container ship SS Mayaguez.

LUKE HISTORY

Renamed in 1 June 1975, and reassigned to MacDill AFB, Florida, the 56th Tactical Fighter Wing conducted combat aircrew training in F-4s and later fighter training in F-16s. In early 1990's, USAF downsized which removed fighter aircraft from MacDill. However, the renamed 56th Fighter Wing remained as part of the active fighter force. On 1 April 1994, the 56th Fighter Wing was reassigned to Luke AFB, Arizona, flying F-16s and the F-15E Strike Eagle. A year later the F-15E training mission moved to Seymour Johnson AFB, North Carolina. On 10 March 2014, the wing received its first F-35A aircraft.

Today, the 56th Fighter Wing, a unit which historically has proven to have some of the world's greatest fighter pilots, continues the mission that has been identified with Luke AFB since 1941: "Train the world's greatest F-16 fighter pilots while deploying mission ready warfighters."



Air Education and Training Command

Luke AFB Glendale, AZ 85307

Building Directory

- | | | | | | |
|---|------------|---|-------------------------------------|---|----------------------------|
|  | MSG Office |  | 1113 Airmen&Family Readiness Center |  | 179 Security Forces |
|  | MSG House |  | 1119 Child Development Center |  | 247 Arts & Crafts Center |
| | |  | 1130 Medical Group |  | 26 Base Chapel |
| | |  | 1143 Youth Center |  | 545 Dining Facility |
| | |  | 1150 Block House |  | 660 Lodging |
| | |  | 1368 BBC Housing Management |  | 700 Health&Wellness Center |
| | |  | 1540 Base Exchange |  | 799 Base Chapel 2 |
| | |  | 1550 Commissary |  | 810 Flight Medicine |
| | |  | 161 Club 5/6 |  | 820 Fitness Center |



TURN-BY-TURN DIRECTIONS

1.5 Mile:

START at Bryant Fitness Center
EAST (Right) on Shooting Star
NORTH (Left) on 139th Ave
WEST (Left) on Mustang
NORTH (Right) on Bong
WEST (Left) on Eagle
SOUTH (Left) on Fighter Country
FOLLOW CURVE of Fighter Country
SOUTH (Right) on Jeristad back to Fighter Country
EAST (Left) on Shooting Star
FINISH Bryant Fitness Center

3 Miles

START at the end of the track road
NORTH on track road
NORTH (Right) on 139th Ave
WEST (Left) on Mustang
NORTH (Right) on Bong
EAST (Right) on Falcon (over the bridge)
Straight (EAST) on Thunderbird
TURN AROUND ON LALOMIA
Straight (WEST) on Thunderbird
WEST on Eagle (over the bridge)
SOUTH (Left) on Bong
EAST (Left) on Mustang
SOUTH (Right) on 139th Ave
SOUTH (Left) on track road
STRAIGHT on track road
FINISH

5 Miles

START at Bryant Fitness Center
WEST (Left) on Shooting Star
SOUTH (Left) on Fighter Country
RIGHT on Harris
FOLLOW CURVE to Super Saber
WEST (Right) on Super Saber
Straight WEST on Super Saber to CLOSED GATE
TURN AROUND ON SUPER SABER
Straight EAST on Super Saber
NORTH (Left) on Johnson Lane
NORTH (Left) on Fighter Country
FOLLOW CURVE of Fighter Country
EAST (Right) on Gillespie
SOUTH (Right) on Bong
WEST (Right) on Falcon
SOUTH (Left) on Homer
EAST (Left) on Mustang
SOUTH (Right) on 139th Ave
FINISH at 139th and Shooting Star